

ARCHITECTURAL LOUDSPEAKERS

**Imprint**

Concept and Design:
brand2 gmbh

Text and Concept · Marco Michels
Art Direction · Frank Heß
Postproduction · Marion Rothmann

Photography:
Stills: Alex Habermehl
Lifestyle: Maik Scharfscheer

Printing:
Druckhaus Main-Echo GmbH & Co. KG,
Aschaffenburg

© Canton 2011

Changes, in particular of a technical nature,
and errors excepted.



InWall



InCeiling



OnWall

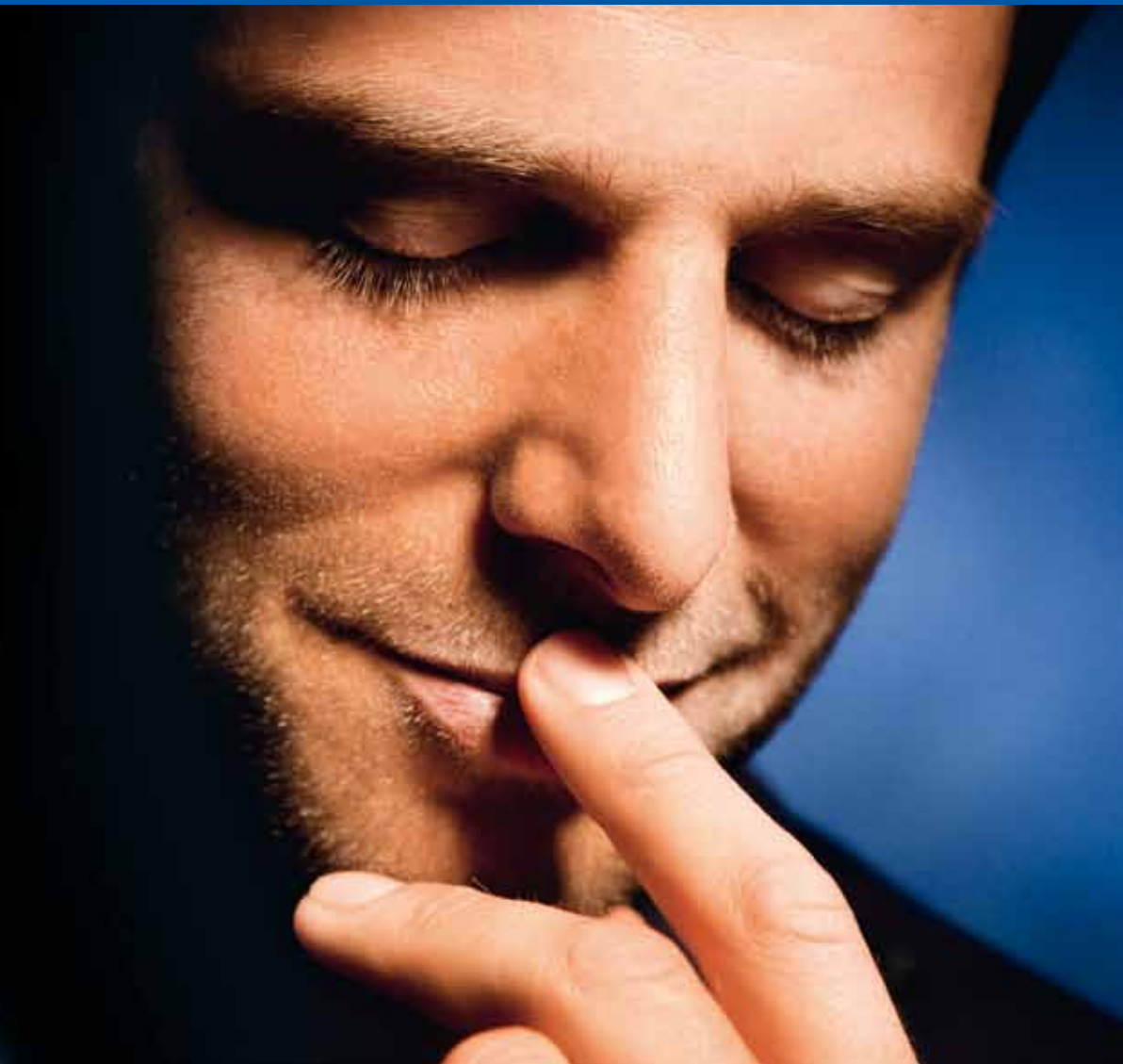


OutDoor

Member of:



Invisible
| sounds
seduce the
eye



Sound solutions for house and garden

If you have particular loudspeaker requirements and a challenging environment, then the Pro House family will have the right solution for you.

This extensive range of architectural loudspeakers provides perfect listening pleasure in and around the whole house. Using the latest HiFi technology and perfectly designed to suit current lifestyle trends, they can be integrated harmoniously into any setting.

The discreet wall and ceiling installation solutions, the subtle OnWall loudspeakers and the robust OutDoor models are perfect for ambient sound, home cinema applications and classic stereo operation.

C O N T E N T S

Your requirements	04
Our sound concepts	06
InWall Line	08
InCeiling Line	10
OnWall Line	12
OutDoor Line	14
Pro House Technology	16
InWall products	18
InCeiling products	20
OnWall / OutDoor products	22
Further products	24
Our world	26



Are you planning your dream home?

Then why not use the flexible possibilities provided by the Pro House family to make your personal sound dream a reality? Thanks to the flexible wall and ceiling installation options available for our loudspeakers there is nothing to stand in the way of your imagination.



Are you an architect?

Then find out more about the new design freedom offered by our aesthetic and high quality sound solutions. Our discreet, recessed loudspeakers are perfect for a wide variety of different room concepts and vanish unobtrusively in wall and ceiling.



Are you renovating your property?

Here you will find practical loudspeakers that are specially designed to cope with different spatial and acoustic challenges. Alongside the high quality sound, this extensive range of loudspeakers is noted for being simple to install.



Do you need special loudspeakers?

Find out more about the flexible installation solutions for demanding situations. These include installation on the terrace, in wet rooms or in the garden and are also suitable for commercial applications, such as restaurants or shops.

InWall

Our high quality, unobtrusive InWall loudspeakers take up very little space and use the volume of the wall to create their rich sound. They are perfectly suited for use with sophisticated HiFi and home cinema applications.



InCeiling

The discreet, round, InCeiling loudspeakers are exceptionally compact and resemble recessed ceiling lights. They are easy to install and their wide dispersion characteristics make them particularly well suited to providing ambient sound.

OnWall

In both sound and looks, the loudspeakers of the Plus Series offer a sophisticated alternative in situations where floorstanders cannot be used and recessed loudspeakers are not appropriate. They combine well with the compact ASF 75 SC subwoofer.



OutDoor

The robust and flexible universal loudspeakers of the Pro Series are ideal for use in and around the house. The moisture-resistant system and shock-resistant cabinets provide outstanding sound even in the most challenging conditions.



Let your wall create the sound

The InWall loudspeakers offer outstanding yet unobtrusive loudspeaker technology and are perfect for HiFi applications. Furthermore, they make excellent additions to classic floorstanders and they can also be combined to create your own home cinema system.

The clever installation concept makes them easy to install in both stud walls and solid walls. The loudspeaker grill can be painted, which means that it can be well hidden or used to create specific colour accents on the wall.

The current range comprises a total of nine different InWall loudspeakers. Four loudspeakers from the 400 Series offer a solid, high quality sound, while five models from the 800 Series are the perfect choice for our most sophisticated customers.



*"At last I can listen to my favourite music
any time, even in the bathroom."*

Enjoy the sound from the ceiling

They look elegant, they are easy to install and they sound amazing. The specially developed InCeiling loudspeakers are the perfect sound solution in any situation.

Round in design, they resemble recessed lights while the grills can be painted so that they blend into the surrounding ceiling. Their wide dispersion characteristics allow them to create a harmonious carpet of sound throughout the house.

All fitted with high quality components, there are four models in the 400 Series and a further four models in the 800 Series. The loudspeakers of the 800 Series are fitted with aluminium membranes and magnetic grill covers, making them a touch more sophisticated than the models of the 400 Series.



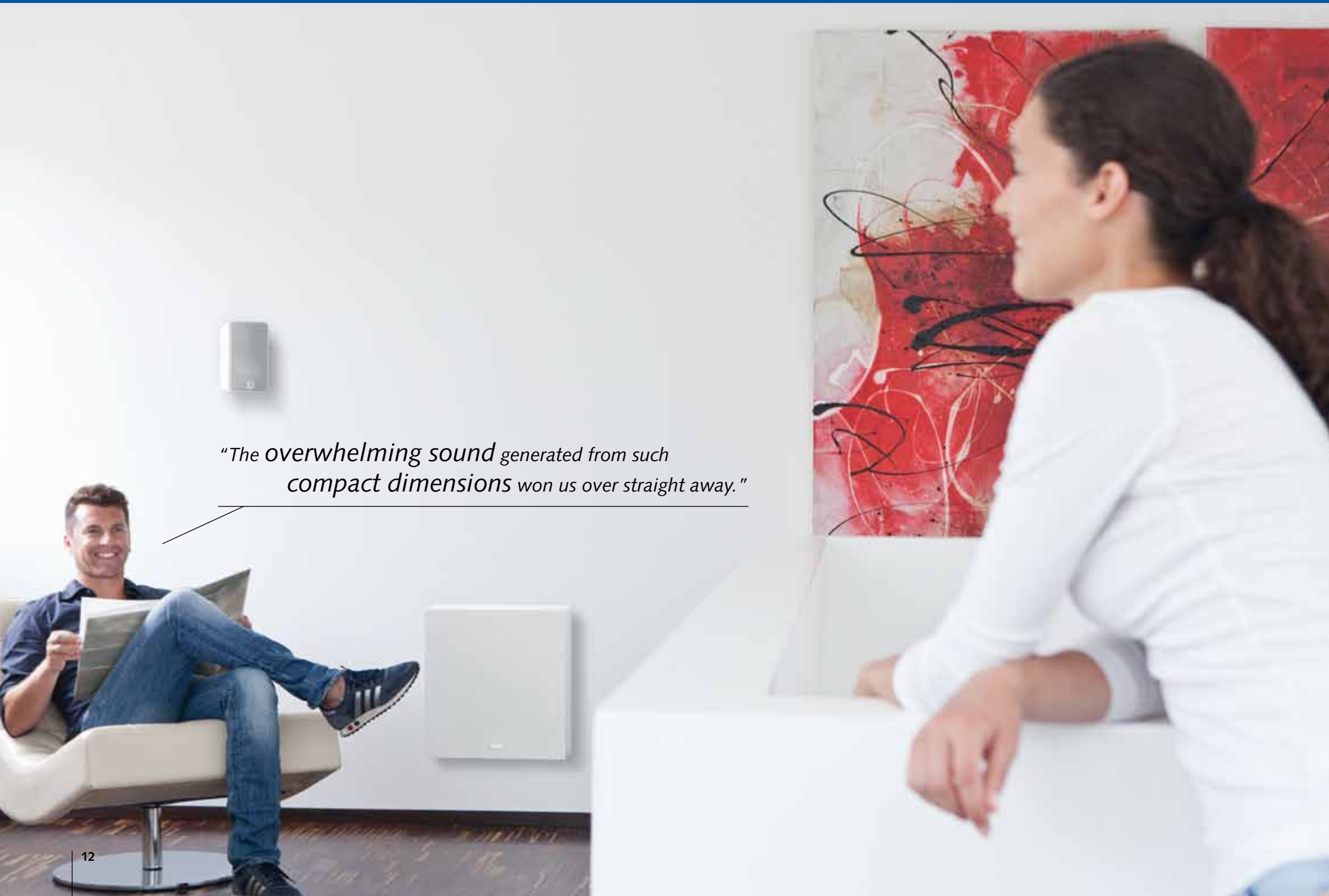
Thanks to the clever use of detail the installation process is particularly quick and easy and does not require a specialist technician.



The InCeiling 650 DT has two tweeters and one woofer system with dual voice coil, enabling it to create stereo sound from a single chassis.



The practical bracket mounts make installation simple and provide a secure hold for the loudspeaker.



"The overwhelming sound generated from such compact dimensions won us over straight away."

Make use of high quality OnWall loudspeakers

The HiFi loudspeakers of the Plus Series with their sophisticated sound quality come into their own at the point where other loudspeakers reach their limit. For example, where there is not enough space for classic floorstanders and where wall or ceiling installation is not an option.

Thanks to their superb sound properties they can be installed anywhere and can be designed to provide precise acoustics in specific zones or ambient sound in a general area.

The five different sizes of loudspeaker in the Plus Series therefore provide versatile sound solutions for a range of situations.



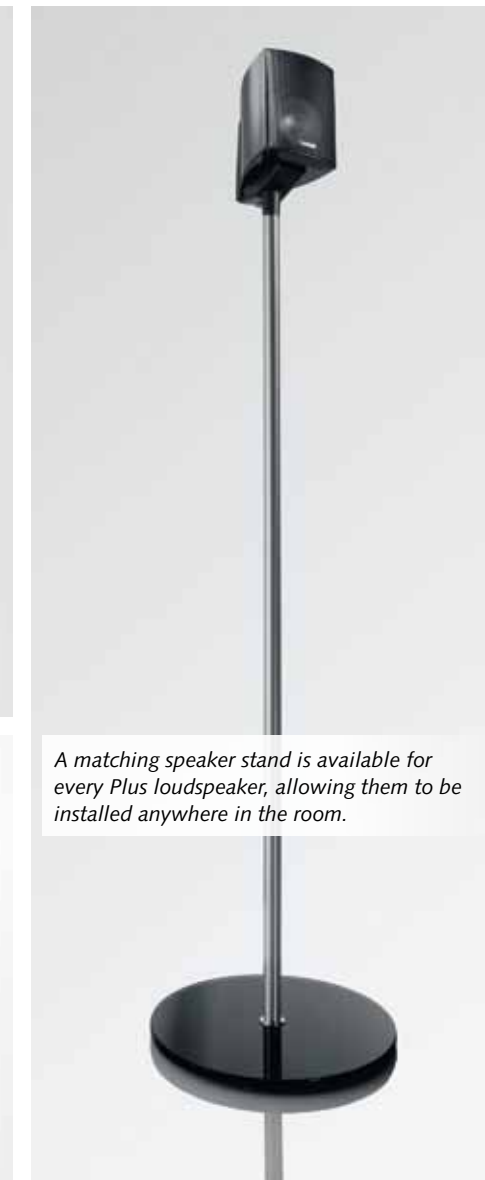
The specially developed, fully adjustable Cantomount brackets enable the Plus loudspeakers to be mounted securely in any situation.



Their compact dimensions also make the Plus loudspeakers perfectly suited to installation in any location.



Suitable for a variety of different rooms and requirements, the loudspeakers are available in black, white and silver.



A matching speaker stand is available for every Plus loudspeaker, allowing them to be installed anywhere in the room.



"Why shouldn't I insist on good sound outdoors too?"

Complete your sound concept

The universal loudspeakers of the Pro Series are moisture-resistant and true survival experts. Specially developed for challenging conditions and outdoor use, they have a shock-resistant cabinet that guarantees long term stability.

The Pro models thus combine structural strength with impressive sound quality. They provide sophisticated acoustics in large spaces and outdoor areas and are the perfect way to round off the range of Canton architectural loudspeakers.

The Pro Series consists of the compact Pro X and high performance Pro XL loudspeakers as well as the slim-line Pro L loudspeakers, which use two woofers to create elegant tone rows. All models are suitable for use in a damp environment and are supplied with a safety cord.

Robust and moisture-resistant, the universal loudspeakers of the Pro Series offer the perfect sound solution for terraces, cellars and gardens.



Thanks to the swivel-mounted brackets, the loudspeakers of the Pro Series can be directed exactly where required.



If wished, the loudspeakers of the Pro Series can also be mounted on the roof to give additional space.



The safety cord supplied eliminates the risk of falling and makes the loudspeakers suitable for use in commercial applications.



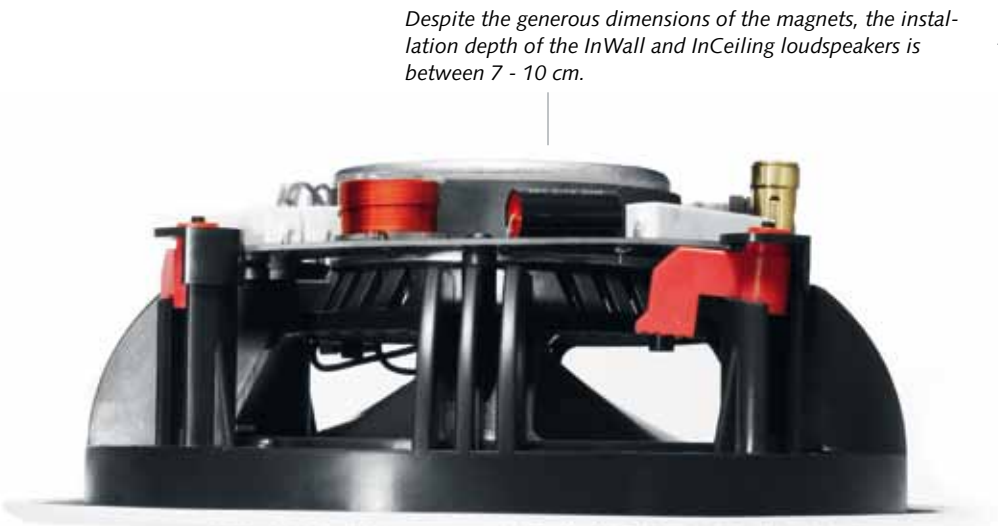
The U-shaped bracket mount supplied makes it easy to fasten the loudspeakers securely to the wall.

Architectural loudspeakers for special situations

The loudspeakers of the Pro House line benefit from our four decades of experience in the development and production of loudspeakers.

They use our latest technology and materials from the HiFi area and satisfy the very highest quality requirements.

Their main strength is the perfect combination of outstanding sound properties with practical details designed to cope with specific conditions.



Despite the generous dimensions of the magnets, the installation depth of the InWall and InCeiling loudspeakers is between 7 - 10 cm.



The loudspeakers of the Plus Series use patented Canton wave surround technology and operate with minimal distortion, even at higher volumes.



The grills of these recessed loudspeakers can be painted, which means they can be used to provide specific colour accents or hidden discreetly on the wall.



The swivel tweeters of the InWall and InCeiling systems allow them to be directed with precision, offering greater flexibility in the choice of installation location.



The tweeter level adjustment of the recessed loudspeakers compensates for the acoustic disadvantages of difficult installation locations and allows the loudspeakers to be adjusted on an individual basis.



The solid, durable connection terminals are easy to use and guarantee trouble-free listening pleasure over many years.



Fitted with a high and low-level input, the ASF 75 SC subwoofer is suitable for use with all conventional amplifiers.



The woofers of the 800 Series are equipped with aluminium membranes to give extremely stable sound levels.



The loudspeakers of the 800 Series offer the elegant solution of magnetically secured covers.



The particularly high quality, swivel-mounted aluminium tweeter system allows the precise adjustment of the dispersion angle.

InWall - 800 Series



InWall 880	InWall 865	InWall 845	InWall 845 LCR	InWall 845 SQ
Installation speaker	Installation speaker	Installation speaker	Installation speaker	Installation speaker
Engineering principle — 2-way	2-way	2-way	2-way	2-way
Power handling (nom./music) — 90/160 watts	60/120 watts	50/100 watts	70/140 watts	50/100 watts
Efficiency — 88.5 dB	87.5 dB	86.5 dB	89 dB	86.6 dB
Frequency response — 42...40,000 Hz	45...40,000 Hz	50...40,000 Hz	42...40,000 Hz	50...40,000 Hz
Dimensions W x H — 26.8 x 37.3 cm (10.6" x 14.7")	23.6 x 33 cm (9.3" x 13")	19 x 27 cm (7.5" x 10.6")	40 x 19 cm (15.7" x 7.5")	19 x 19 cm (7.5" x 7.5")
Installation opening W x H — 23.4 x 33.9 cm (9.2" x 13.3")	19.5 x 29 cm (7.7" x 11.4")	15 x 23 cm (5.9" x 9.1")	36 x 15 cm (14.2" x 5.9")	15 cm Ø (5.9" Ø)
Installation depth — 10 cm (3.9")	8.5 cm (3.3")	7 cm (2.8")	7 cm (2.8")	8.5 cm (3.3")
Weight — 2.5 kg	2 kg	1.3 kg	2 kg	1.1 kg



InWall - 400 Series



InWall 480	InWall 465	InWall 445	InWall 445 LCR
Installation speaker	Installation speaker	Installation speaker	Installation speaker
Engineering principle — 2-way	2-way	2-way	2-way
Power handling (nom./music) — 90/140 watts	60/110 watts	50/100 watts	80/130 watts
Efficiency — 88 dB	87 dB	86 dB	89 dB
Frequency response — 42...30,000 Hz	45...30,000 Hz	50...30,000 Hz	42...30,000 Hz
Dimensions W x H — 26.8 x 37.2 cm (10.6" x 14.6")	22.9 x 32.3 cm (9.0" x 12.7")	18.3 x 26.4 cm (7.2" x 10.4")	39.3 x 18.3 cm (15.5" x 7.2")
Installation opening W x H — 23.4 x 33.8 cm (9.2" x 13.3")	19.5 x 28.9 cm (7.7" x 11.4")	14.9 x 23 cm (5.9" x 9.1")	35.9 x 14.9 cm (14.1" x 5.9")
Installation depth — 10.5 cm (4.1")	8.5 cm (3.3")	7 cm (2.8")	7 cm (2.8")
Weight — 2.2 kg	1.6 kg	1 kg	1.7 kg



The solid, high performance woofers of the 400 Series operate with polypropylene membranes.



The loudspeaker grills of the 400 Series are easy to attach and can be painted.



The swivel-mounted tweeters make it easy to adjust the dispersion angle with great precision.



The woofers of the 800 Series are equipped with aluminium membranes to give extremely stable sound levels.



The loudspeakers of the 800 Series offer the elegant solution of magnetically secured covers.



The particularly high quality, swivel-mounted aluminium tweeter system allows the precise adjustment of the dispersion angle.

InCeiling - 800 Series



InCeiling 880	InCeiling 865 DT	InCeiling 865	InCeiling 845
Installation speaker	Installation speaker	Installation speaker	Installation speaker
Engineering principle — 2-way	2 x 2-way	2-way	2-way
Power handling (nom./music) — 90/160 watts	2 x 60/120 watts	60/120 watts	50/100 watts
Efficiency — 88.5 dB	87.5 dB	87.5 dB	86.5 dB
Frequency response — 42...40,000 Hz	45...40,000 Hz	45...40,000 Hz	50...40,000 Hz
Dimensions Ø — 28.5 cm (2.5")	24.5 cm (9.6")	24.5 cm (9.6")	19 cm (7.5")
Installation opening Ø — 24.4 cm (9.6")	20.4 cm (8.0")	20.4 cm (8.0")	15 cm (5.9")
Installation depth — 9.5 cm (3.7")	9 cm (3.5")	9 cm (3.5")	7.5 cm (3")
Weight — 2.3 kg	1.9 kg	1.7 kg	1 kg



InCeiling 480	InCeiling 465 DT	InCeiling 465	InCeiling 445
Installation speaker	Installation speaker	Installation speaker	Installation speaker
Engineering principle — 2-way	2 x 2-way	2-way	2-way
Power handling (nom./music) — 90/140 watts	2 x 60/110 watts	60/110 watts	50/100 watts
Efficiency — 88 dB	87 dB	87 dB	86 dB
Frequency response — 42...30,000 Hz	45...30,000 Hz	45...30,000 Hz	50...30,000 Hz
Dimensions Ø — 28.8 cm (11.3")	23.8 cm (9.4")	23.8 cm (9.4")	20 cm (7.9")
Installation opening Ø — 25.4 cm (10")	20.4 cm (8")	20.4 cm (8")	16.6 cm (6.5")
Installation depth — 11 cm (4.3")	8.5 cm (3.3")	8.5 cm (3.3")	7 cm (2.8")
Weight — 2 kg	1.6 kg	1.5 kg	1 kg



The solid, high performance woofers of the 400 Series operate with polypropylene membranes.



The loudspeaker grills of the 400 Series are easy to attach and can be painted.



The swivel-mounted tweeters make it easy to adjust the dispersion angle with great precision.





The Plus loudspeakers have a sophisticated bass tone foundation thanks to the aluminium membrane and the wave surround technology.



The one-piece aluminium dome and the generously proportioned magnet ensure maximum precision in the high frequency reproduction.



The specially designed bass reflex vent of the Plus XXL.2 loudspeakers gives an enormous bass sound for the size of cabinet.

Plus Series



surface finish:
high gloss

	Plus XXL.2	Plus XL.3	Plus X.3	Plus XS.2	Plus MX.3
	Compact speaker	Minispeaker	Minispeaker	Minispeaker	Minispeaker
Engineering principle	— 2-way, bass reflex systemsystem	2-way, closed	2-way, closed	2-way, closed	2-way, closed
Power handling (nom./music)	— 70/140 watts	60/120 watts	45/90 watts	45/90 watts	40/70 watts
Efficiency	— 88 dB	88 dB	87 dB	87 dB	85 dB
Frequency response	— 38...30,000 Hz	40...30,000 Hz	45...30,000 Hz	65...30,000 Hz	120...25,000 Hz
Dimensions W x H x D	— 20.5 x 30 x 19 cm (8.1" x 11.8" x 7.5")	16 x 24 x 15.5 cm (6.3" x 9.4" x 6.1")	13 x 20 x 13 cm (5.1" x 7.9" x 5.1")	13 x 12.5 x 14 cm (5.1" x 4.9" x 5.5")	9 x 11.5 x 10 cm (3.5" x 4.5" x 3.9")
Weight	— 3.5 kg	2.1 kg	1.7 kg	1.2 kg	0.8 kg
Wall mount	— Cantomount XXL	Cantomount XL	Cantomount	Cantomount	supplied



Pro Series



	Pro L.2	Pro XL.3	Pro X.3
	Universal loudspeaker	Universal loudspeaker	Universal loudspeaker
Engineering principle	— 2-way, closed	2-way, closed	2-way, closed
Power handling (nom./music)	— 70/150 watts	60/120 watts	50/100 watts
Efficiency	— 87.5 dB	88 dB	87 dB
Frequency response	— 40...26,000 Hz	40...26,000 Hz	45...26,000 Hz
Dimensions W x H x D	— 13 x 31 x 16.5 cm (5.1" x 12.2" x 6.5")	16 x 24 x 15.5 cm (6.3" x 9.4" x 6.1")	13 x 20 x 13 cm (5.1" x 7.9" x 5.1")
Weight	— 2 kg	2.1 kg	1.7 kg
Special feature	— moisture-proof	moisture-proof	moisture-proof



The safety cord supplied with the Pro X loudspeakers is also suitable for use in commercial catering situations.



The polycarbonate cabinets of the Pro loudspeakers are UV-resistant, shock-resistant and moisture-resistant, ensuring long term stability.



The swivel-mounted fitting is highly robust and allows the flexible adjustment of the loudspeaker.





The extremely flat and compact ASF subwoofer can be placed virtually anywhere.



The mount supplied with the ASF subwoofer allows it to be mounted on the wall out of the way.



Woofers with aluminium membranes and a high-performance amplifier provide a solid bass tone foundation.

Subwoofer, ASF 75 SC



ASF 75 SC	
Active subwoofer system	
Engineering principle	— Down-firing, bass reflex system
Output (nom./music)	— 60/120 watts
Frequency response	— 33...200 Hz
Dimensions W x H x D	— 43 x 15.5 x 41 cm (16.9" x 6.9" x 16.1")
Weight	— 9.2 kg
Special feature	— Wall mounting



Plus Media 3



Plus Media 3	
Active speaker	
Engineering principle	— 2-way, bass reflex system
System power output	— 2 x 45 watts
Frequency response	— 40...30,000 Hz
Dimensions W x H x D	— 16 x 24 x 15.5 cm (6.3" x 9.4" x 6.1")
Weight	— 2.2 kg
Special feature	— On and off technology



The Plus Media 3 loudspeakers are highly flexible and are perfect for a variety of applications such as presentations.



Their remarkable sound volume marks out the Plus Media 3 loudspeakers even when used with MP3 players.



The 2 x 20 watt amplifier with its external subwoofer connection completes the features of these loudspeakers.



- Reference
- HiFi
- Home Cinema
- Pro House
- Flexideliity

Our world is sound

Despite being one of Europe's leading loudspeaker manufacturers we have remained a family business.

It is our aim to provide the right sound solution for every requirement at the right price. With that in mind we develop and manufacture loudspeakers for a wide range of requirements, living environments and budgets.

Our product line-up includes HiFi loudspeakers and home cinema systems, high-end and architectural loudspeakers as well as special solutions for the iPod generation.



Timeless. The Reference Series stands for the finest high-end technologies and hand-crafted loudspeakers in premium finishes. They show what is technically possible and impress with their powerful sound and utter perfection.



Our HiFi solutions range from flat OnWall loudspeakers to massive floorstanders and from powerful subwoofers to filigree shelf units. The broad portfolio is designed to address a range of different requirements in terms of technology, design and performance.



One of our main priorities lies in the development of sophisticated home cinema-sound solutions. We design and manufacture classic 5.1 systems, innovative 2.1 virtual surround solutions and offer the chance to design individual systems using our HiFi-loudspeakers.



With our Pro House family we offer a wide range of flexible sound solutions for the whole house. The range includes built-in loudspeakers for wall and ceiling as well as special solutions for OnWall loudspeakers and loudspeakers for outdoor areas.



Our newest product family is specially designed to cater for a young, mobile lifestyle. The your_World wireless network with loudspeakers and docking stations offers maximum flexibility and can be extended at any time.